

Ford Convertible Cabriolet

Assembly Instructions

CREATIVE PARK

<http://www.canon.com/c-park/>



View of completed model * This model was designed for Papercraft and may differ from the original in some respects.

Assembly tip

- Write the number of each part on the reverse side of the part in pencil upon cutting it out, to be sure you can tell which part is which later.
- Before gluing, crease the paper along mountain and valley fold lines. Trace along the folds with a ruler and an exhausted ballpoint pen (out of ink) to get a sharper fold.
- Make sure rounded sections are nice and stiff.

Tools

- Scissors
- Ruler, set square
- Glue (Wood glue or craft glue recommend)
- Exhausted ballpoint pen (out of ink)
- Toothpicks (for use in applying glue)
- Tweezers (useful for handling small parts)
- Pencil

Key to symbols

----- Dotted line	Mountain fold		Fold so that the printed pattern faces outside.
- - - - - Dashed and dotted line	Valley fold		Fold so that the printed pattern faces inside.
————— Solid line	Cut a notch along this line.		Cut along the center of the line.
	Scissors mark		

	Dots indicate parts to be glued; dotted lines indicate approximate area for application of glue.
● Red dot	Glue parts with the same number together.
● Green dot	Glue areas within the same part together.
● Blue dot	Glue to the reverse side of the specified part.
★ Blue star	Glue reverse side to reverse side of other part.

- Assembly Instructions : Six A4 sheets (No. 1 to No. 6)
Build this model with careful reference to the Assembly Instructions.



Glue, scissors and other tools may be dangerous to young children so be sure to keep them out of the reach of young children.

1

Carefully shape curves.

Affix with glue.

2

1

Do not glue yet.

3

Glue at the last stage.

Align fold lines and flaps and glue together.

Carefully shape curves.

Affix with glue.

6

7

8

5

Affix with glue.

9

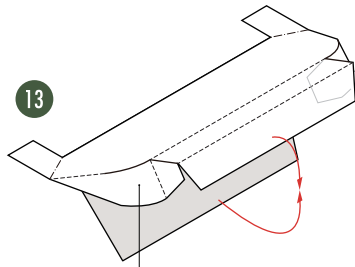
10

Shaded areas in diagrams indicate reverse side of parts.

4

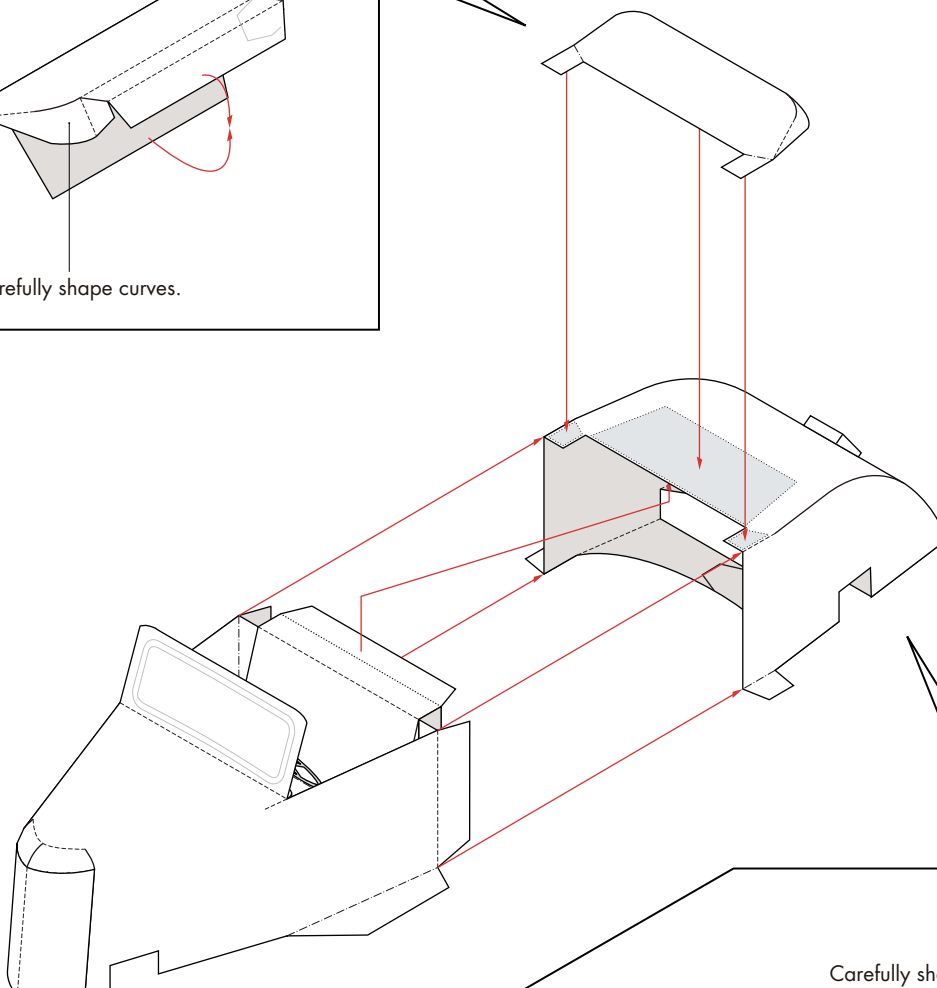
Carefully shape curves.

2



13

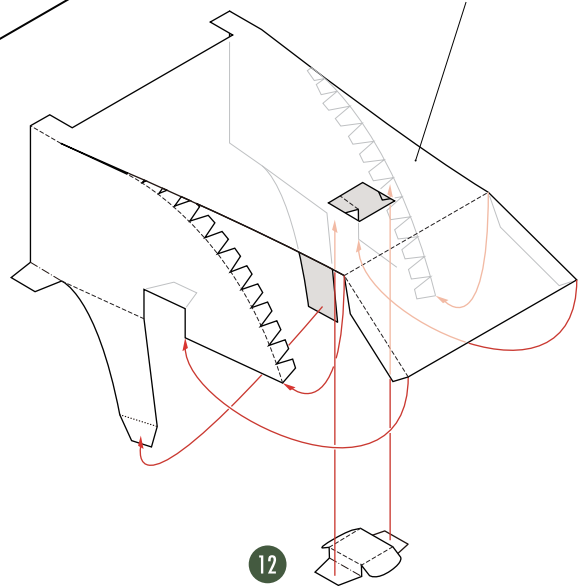
Carefully shape curves.



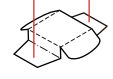
1

11

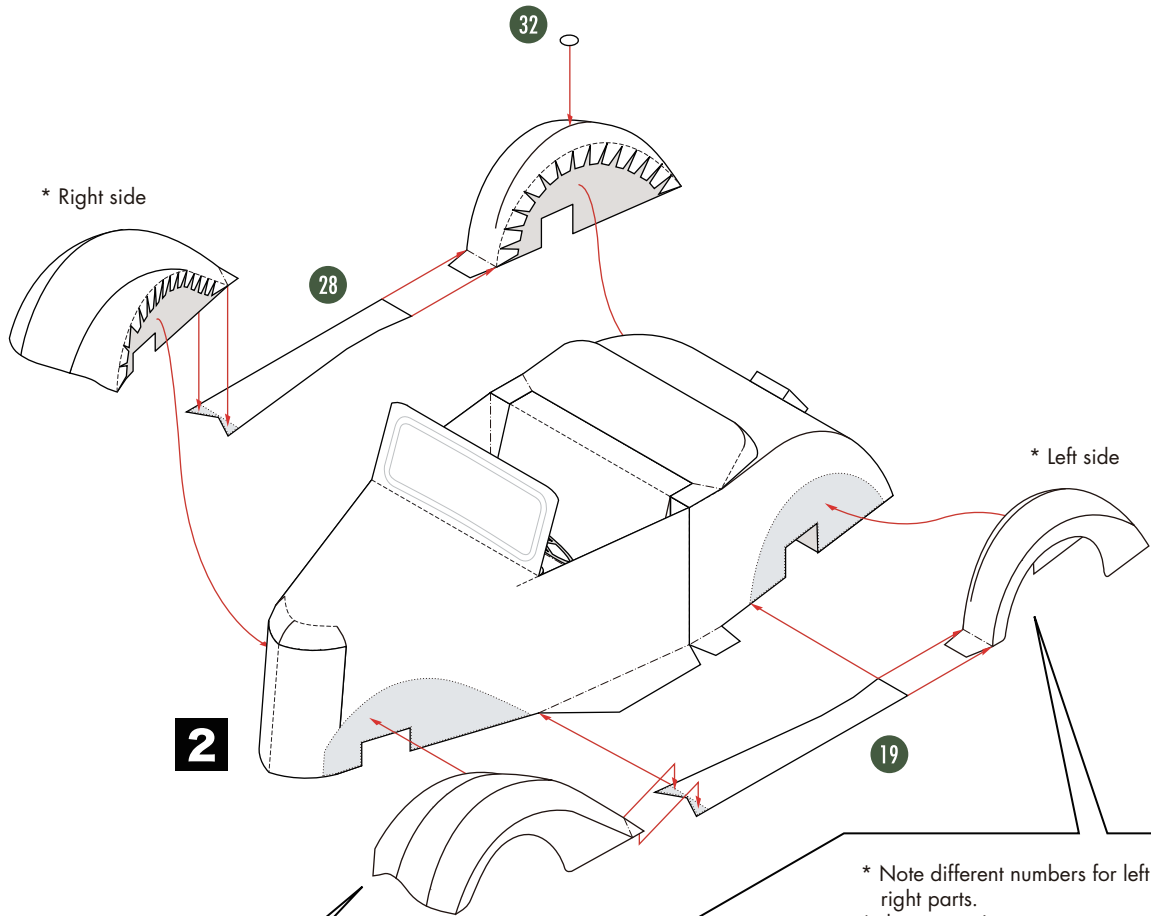
Carefully shape curves.



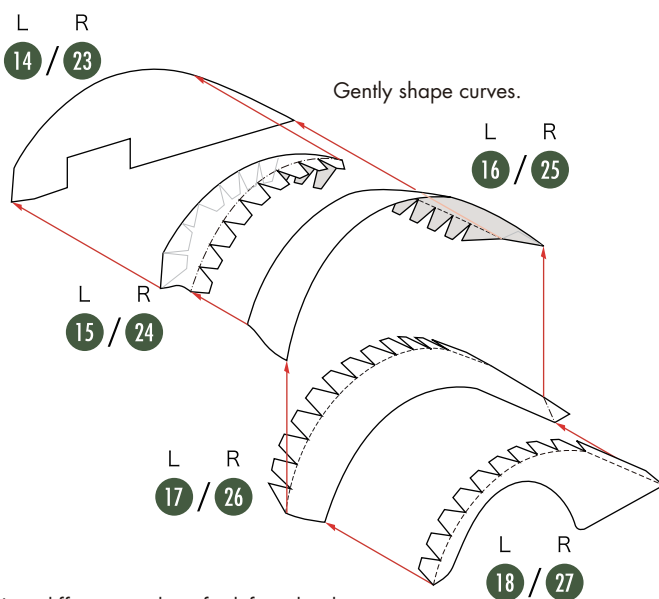
12



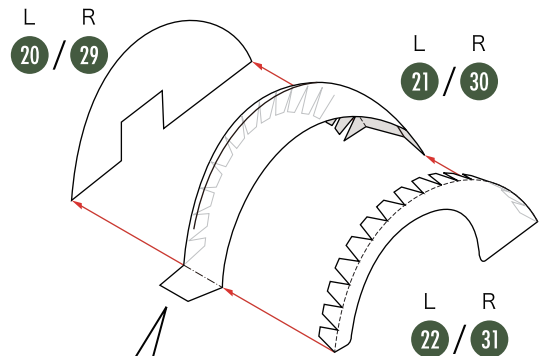
3



* Note different numbers for left and right parts.
* diagram is L



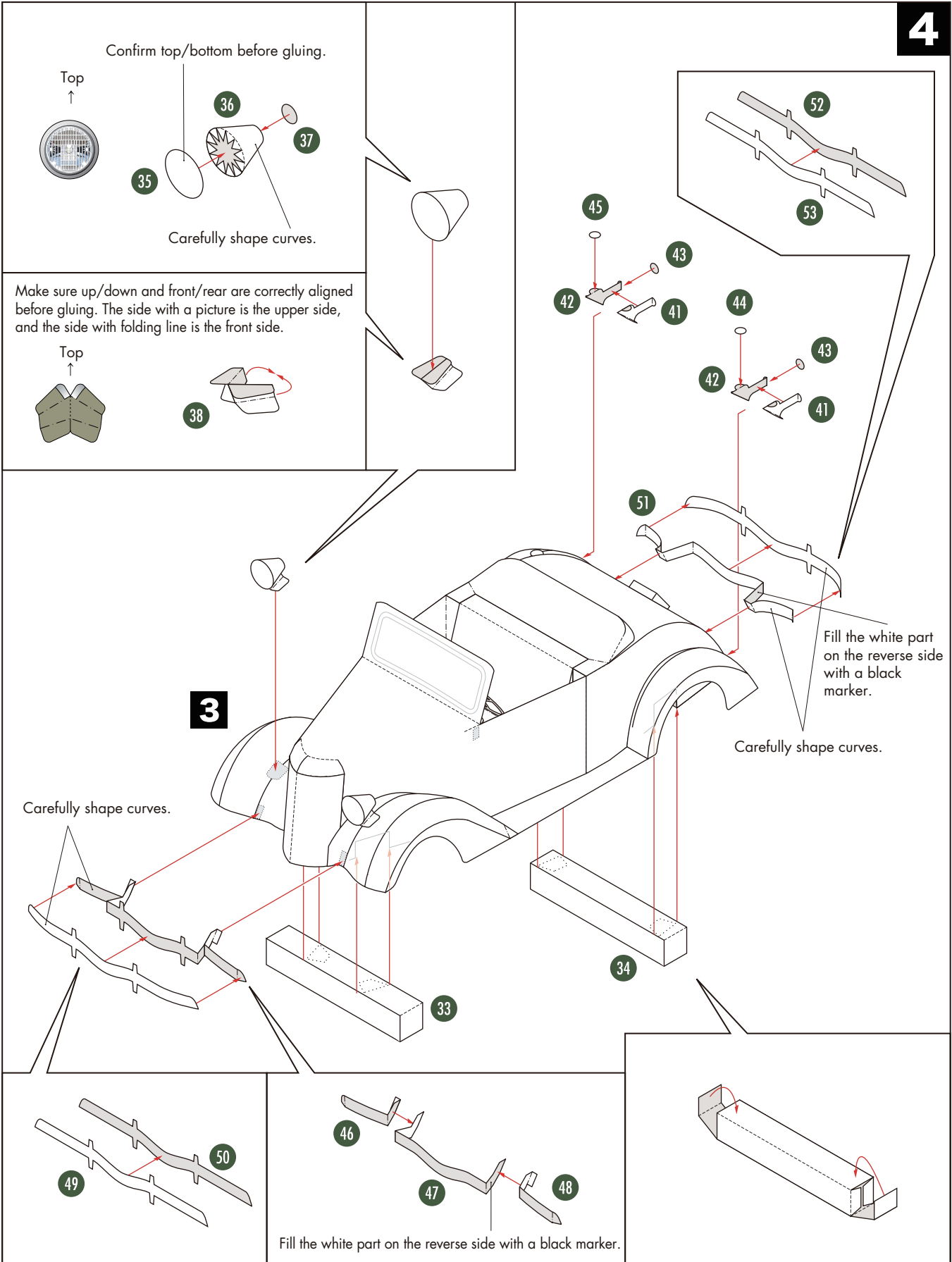
* Note different numbers for left and right parts.
* diagram is L



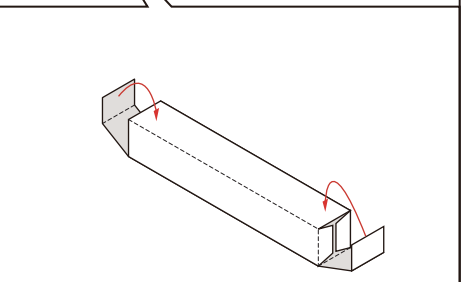
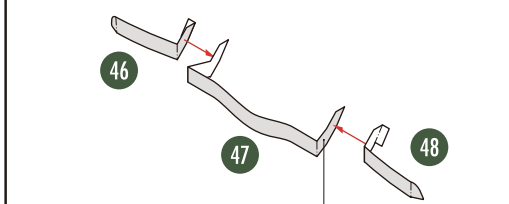
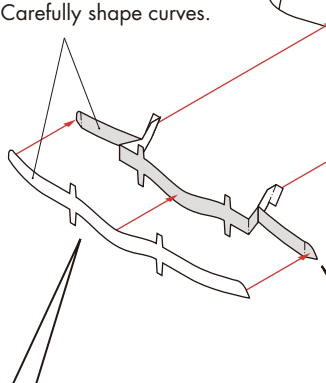
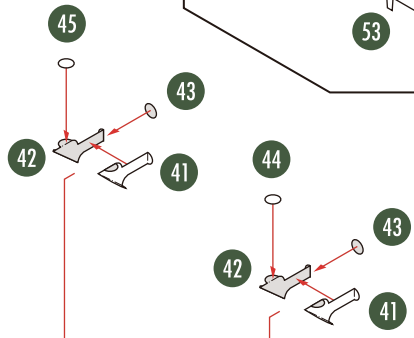
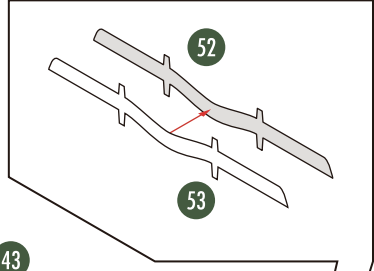
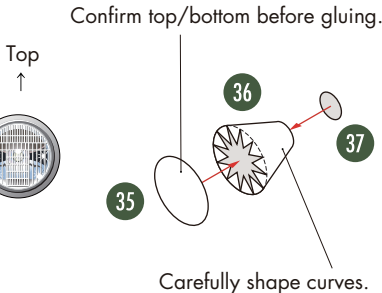
Carefully shape curves.

L R
21 / 30

4



3



5

